

259 North Ridge Street Tree Inventory & Replacement Chart

G:Good, F:Fair, P:Poor, D:Dead, C: Cavity, UB: Crown

Tree replacement represents number of 2" - 2 1/2" tree

10/31/2016

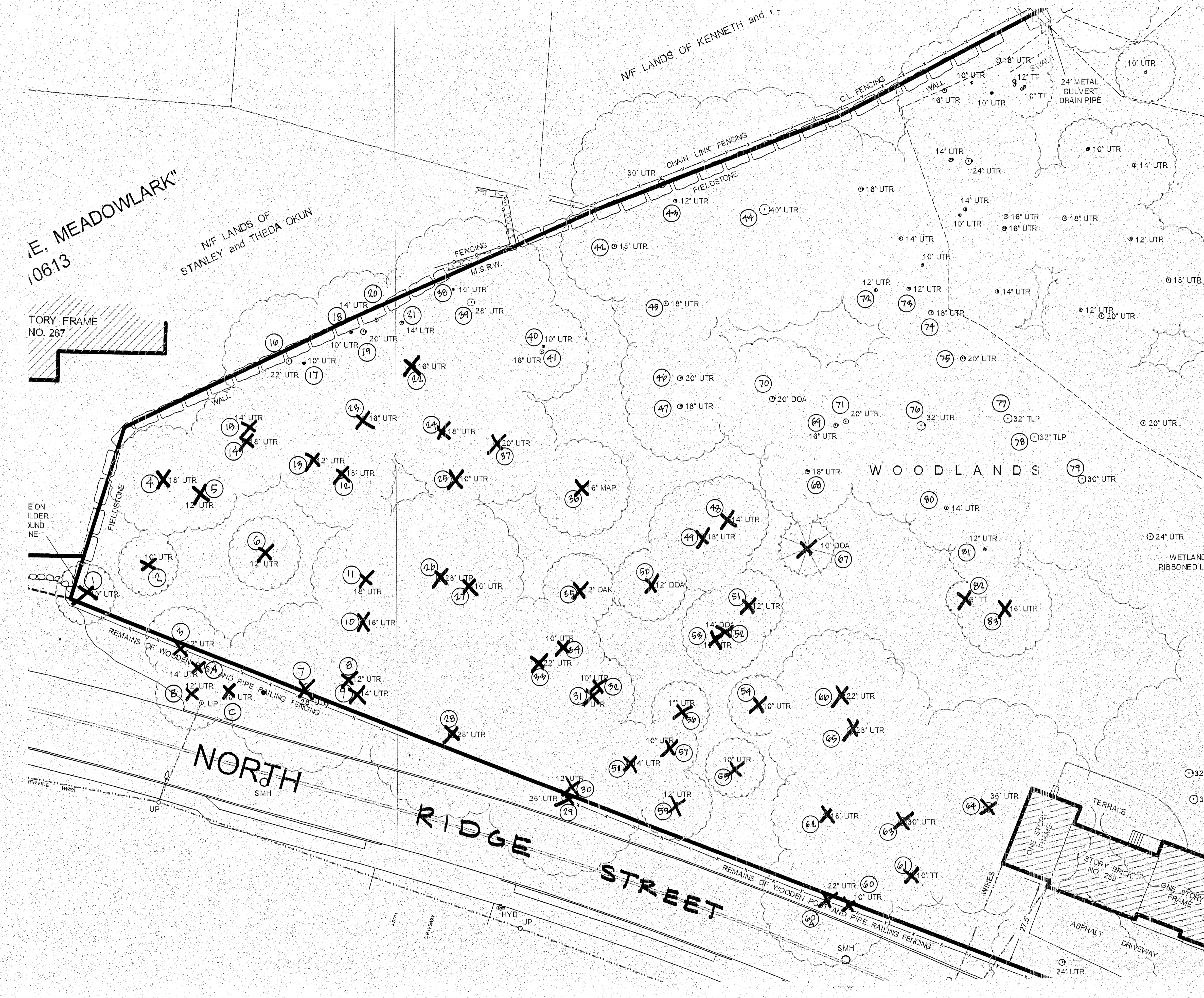
Tree tag	Species	Diameter	Condition	Status	Replacement Requirements
1	Black Cherry	10"	P, uprooting	REMOVE	1
2	Norway Maple	10"	F	REMOVE	1
3	Walnut	12"	F	REMOVE	1
4	Maple	18"	P,UB	REMOVE	1
5	Walnut	12"	F	REMOVE	1
6	Black Cherry	12"	F	REMOVE	1
7	Walnut	28"	G	REMOVE	1
8	Maple	12"	G	REMOVE	1
9	Oak	14"	F	REMOVE	1
10	Hickory	16"	G	REMOVE	1
11	Elm	18"	G	REMOVE	1
12	Black Cherry	18"	F	REMOVE	1
13	Black Cherry	12"	F	REMOVE	1
14	Black Cherry	18"	F	REMOVE	1
15	Maple	14"	G	REMOVE	1
16	Black Cherry	22"	F	Remain	
17	Maple	10"	F	Remain	
18	Hickory	10"	F	Remain	
19	Black Cherry	20"	P	Remain	
20	Maple	14"	F	REMOVE	1
21	Hickory	14"	F	Remain	
22	Oak	16"	G	REMOVE	1
23	Maple	16"	G	REMOVE	1
24	Maple	18"	G	REMOVE	1
25	Ash	10"	D	REMOVE	0
26	Walnut	28"	F	REMOVE	2
27	Oak	10"	F	REMOVE	1
28	Ash	28"	P	REMOVE	1
29	Elm	26"	P,UB	REMOVE	1
30	Maple	12"	F	REMOVE	1
31	Ash	14"	D	REMOVE	0
32	Black Cherry	10"	P	REMOVE	1
33	Tulip	22"	G	REMOVE	1
34	Elm	10"	P	REMOVE	1
35	Oak	12"	F	REMOVE	1
36	Maple	16"	G	REMOVE	1

Tree tag	Species	Diameter	Condition	Status	Replacement Requirements
37	Black Cherry	10"	P, uprooting	REMOVE	1
38	Cherry	10"	P	Remain	
39	Ash	28"	G	Remain	
40	Maple	10"	F	Remain	
41	Maple	16"	P, uprooted	Remain	
42	Tulip	18"	P	Remain	
43	Maple	12"	P	Remain	
44	Tulip	40"	G	Remain	
45	Tulip	18"	F	Remain	
46	Oak	20"	G	Remain	
47	Ash	18"	F	Remain	
48	Ash	14"	F	REMOVE	1
49	Unknown	18"	D	REMOVE	0
50	Maple	12"	F	REMOVE	1
51	Elm	12"	P	REMOVE	1
52	Maple	14"	F	REMOVE	1
53	Cherry	10"	D	REMOVE	0
54	Maple	10"	D	REMOVE	0
55	Maple	10"	P	REMOVE	1
56	Cherry	12"	F	REMOVE	1
57	Cherry	10"	P	REMOVE	1
58	Maple	14"	F	REMOVE	1
59	Maple	12"	F	REMOVE	1
60	Maple	10"	P	REMOVE	0
60A	Maple	22"	F	REMOVE	1
61	Maple	10"	F	REMOVE	0
62	Oak	18"	F	REMOVE	1
63	Walnut	30"	F	REMOVE	2
64	Walnut	36"	F	REMOVE	2
65	Walnut	28"	F	REMOVE	2
66	Walnut	22"	F	REMOVE	1
67	Spruce	10"	D, uprooted	REMOVE	0
68	Beech	16"	D	REMOVE	0
69	Ash	16"	F	Remain	
70	Maple	20"	P	Remain	
71	Maple	26"	F	Remain	
72	Maple	12"	F	Remain	
73	Maple	12"	F	Remain	
74	Ash	12"	F	Remain	
75	Tulip	20"	F	Remain	

Tree tag	Species	Diameter	Condition	Status	Replacement Requirements
76	Tulip	32"	P	Remain	
77	Tulip	32"	F	Remain	
78	Tulip	32"	F	Remain	
79	Walnut	30"	F	Remain	
80	Maple	14"	P	Remain	
81	Maple	12"	F	Remain	
82	Magnolia	10"	P	Remain	
83	Maple	16"	P	REMOVE	1

Trees in Right of Way

Tag	Species	Diameter	Condition	Status	Replacement Requirements
A	unknown	14"	F	REMOVE	
B	unknown	12"	F	REMOVE	
C	unknown	10"	F	REMOVE	



**TREE INVENTORY & REMOVAL PLAN**  
 259 NORTH RIDGE STREET  
 RYE BROOK, NEW YORK  
 NOVEMBER 16, 2016 NOT TO SCALE  
 PREPARED BY: WESTCHESTER COUNTY PLANNING DEPARTMENT